

MKPA-MC

交流滤波电容



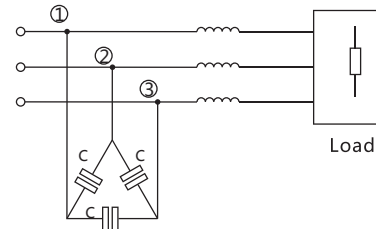
应用 / Application

- 广泛应用于电力电子设备中作交流滤波用；
- 在大功率UPS，开关电源，变频器等设备中作交流滤波，治理谐波及提高功率因数。
- Widely used in power electronic equipment used for the AC filler;
- In the high-power UPS, switching power supply, inverter and other equipment for the AC filler, harmonics and improve power factor control.

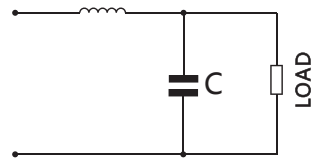
产品特点 / Introduction

- 铝外壳封装，高温高导填充料注塑；
- 铜螺母、铜螺杆引出，安装简单方便，阻燃定位盖绝缘；
- 容值高，体积小，耐压高，自愈性强；
- 承受高谐波电流，高DV/DT承受力。
- Aluminum housing package, high temperature and high conductive filler injection molding;
- Copper nut, copper screw extraction, installation is simple and convenient, flame retardant positioning cover insulation;
- High capacitance, small size, high pressure level, self healing;
- High frequency harmonic current, high DV/DT bearing capacity.

典型应用电路 / Typical Circuit

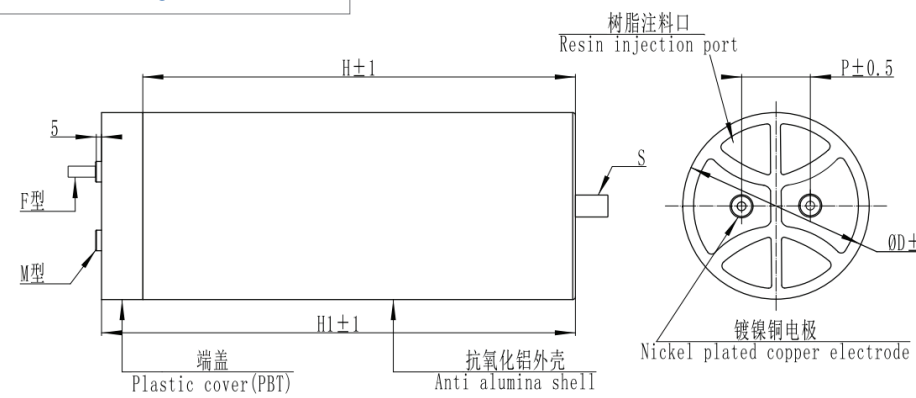


AC Filter Capacitance(C)



AC Filter Capacitance(C)

外形图 / Outline Drawing



◆外形尺寸Outline dimension Unit:mm

ΦD	76	86	86	96	116	136
P	32	32	45	45	50	50
S	M12*16	M12*16	M12*16	M12*16	M16*25	M16*25
M螺母	M6*10	M6*10	M6*10	M6*10	M6*10	M6*10
F螺杆	M8*20	M8*20	M8*20	M8*20	M8*20	M8*20

◆规格参数Specification parameter



MKPA-MC

交流滤波电容

技术参数 / Technical Data

执行标准Implemented standard	GB/T 17702、IEC61071
气候等级Climatic category	40/85/21
额定电压 (Un)Rated Voltage	330V.AC-3000V.AC
容量范围 (Cn)Capacitance range	10 μF~1500 μF
容量偏差Capacitance tolerance	±5%(J)、±10% (K)
耐电压Withstand voltage	
极间 between terminals	2.15Un(VAC)/10S
极壳 between terminals and case	2Ui+1000V.AC@50HZ60S
绝缘电阻 Insulation resistance	RixCn ≧ 10000S (100VDC.60S)

常用规格 / Dimension

Un=330V.AC Us=1200V

Cn (μF)	φD (mm)	H (mm)	ESL (nH)	dv/dt (V/μS)	Ip (KA)	Is (KA)	Irms(A)	ESR (mΩ) @1KHz	Rth (K/W)	P (mm)	weight (kg)	Part number
80	76	80	40	80	6.4	19.2	30	4	4.2	32	0.5	AMC0806K00330*****
120	86	80	40	70	8.4	25.2	40	2.8	3.3	32	0.7	AMC0127K00330*****
150	96	80	45	70	10.5	31.5	50	3.5	1.7	45	0.75	AMC0157K00330*****
230	86	130	50	60	13.8	41.4	70	2.4	1.3	32	1.1	AMC0237K00330*****
300	96	130	50	50	15.0	45.0	75	2.8	1.0	45	1.2	AMC0307K00330*****
420	116	130	60	50	21.0	63.0	80	1.9	1.2	50	1.6	AMC0427K00330*****

Un=450V.AC Us=1520V

Cn (μF)	φD (mm)	H (mm)	ESL (nH)	dv/dt (V/μS)	Ip (KA)	Is (KA)	Irms(A)	ESR (mΩ) @1KHz	Rth (K/W)	P (mm)	weight (kg)	Part number
50	76	80	40	90	4.5	13.5	30	4	4.2	32	0.5	AMC0506K00450*****
65	86	80	50	80	5.2	15.6	40	2.8	3.3	32	0.7	AMC0656K00450*****
80	96	80	45	80	6.4	19.2	50	3.5	1.7	45	0.75	AMC0806K00450*****
100	76	130	50	70	7.0	21.0	60	3.2	1.3	32	0.75	AMC0107K00450*****
160	96	130	50	50	8.0	24.0	75	2.8	1.0	45	1.2	AMC0167K00450*****
250	116	130	60	50	12.5	37.5	80	1.9	1.2	50	1.6	AMC0257K00450*****

Un=690V.AC Us=2100V

Cn (μF)	φD (mm)	H (mm)	ESL (nH)	dv/dt (V/μS)	Ip (KA)	Is (KA)	Irms(A)	ESR (mΩ) @1KHz	Rth (K/W)	P (mm)	weight (kg)	Part number
40	76	130	50	100	4.0	12.0	30	2.8	6.0	32	0.75	AMC0406K00690*****
50	76	150	45	90	4.5	13.5	35	2.4	5.1	32	0.85	AMC0506K00690*****
60	86	130	45	80	4.8	14.4	40	2.2	4.3	32	1.1	AMC0606K00690*****
65	86	150	50	80	5.2	15.6	45	1.8	4.1	32	1.2	AMC0656K00690*****
75	96	130	50	80	6.0	18.0	50	1.5	4.0	45	1.2	AMC0756K00690*****
80	96	150	55	75	6.0	18.0	60	1.2	3.5	45	1.3	AMC0806K00690*****
120	116	150	65	50	6.0	18.0	75	0.6	4.4	50	1.8	AMC0127K00690*****

Un=850V.AC Us=2850V

Cn (μF)	φD (mm)	H (mm)	ESL (nH)	dv/dt (V/μS)	Ip (KA)	Is (KA)	Irms(A)	ESR (mΩ) @1KHz	Rth (K/W)	P (mm)	weight (kg)	Part number
25	76	130	50	110	2.8	8.3	35	1.5	8.2	32	0.75	AMC0256K00850*****
30	76	150	60	100	3.0	9.0	40	1.2	7.8	32	0.85	AMC0306K00850*****
32	86	130	45	100	3.2	9.6	50	1.15	5.2	32	1.1	AMC0326K00850*****
45	86	150	50	90	4.1	12.2	50	1.05	5.7	32	1.2	AMC0456K00850*****
40	96	130	50	90	3.6	10.8	50	1	6.0	45	1.2	AMC0406K00850*****
60	96	150	60	85	5.1	15.3	60	0.9	4.6	45	1.3	AMC0606K00850*****
60	116	130	60	80	4.8	14.4	65	0.85	4.2	50	1.6	AMC0606K00850*****
90	116	150	65	75	6.8	20.3	75	0.8	3.3	50	1.8	AMC0906K00850*****